

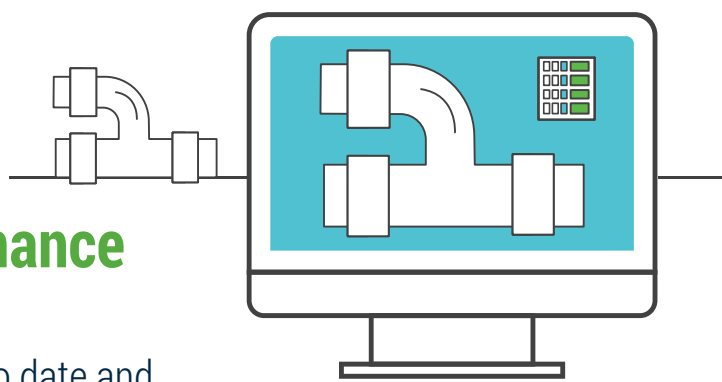
TOP 10 NEW CAPABILITIES OF

Bentley's Water Distribution CONNECT Edition Applications

1

Control the Maintenance of Your Model

Ensure models are always up to date and accurately represent the real world by identifying and controlling changes from GIS and other data sources



2

Track Model Changes Efficiently

Ensure data quality with change tracking to access historical changes to current models



3

Overlay Hydraulic Models on Bing Maps

Align models with Bing road and aerial backgrounds to accurately convey real-world conditions by adding specific control points



4

Create Customized and Practical Reports

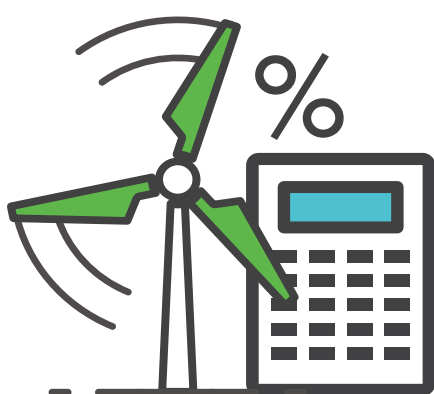
Produce customized reports, selecting elements such as maps, graphs, tables and export in any file format to provide quality deliverables



5

Estimate Energy Generated Though Turbines

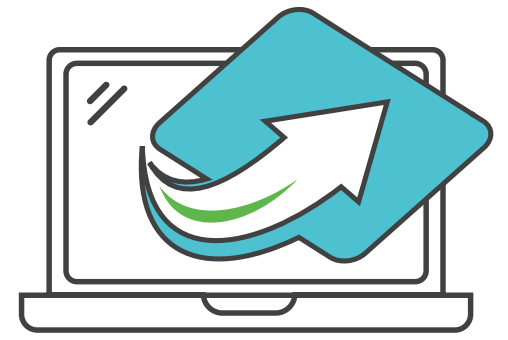
Calculate energy generation from turbines and model the value of that energy for reliable estimations



6

Customize File Packaging

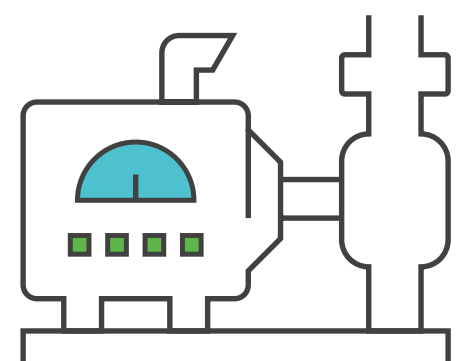
Create easy to share project packages for archival and transmittal by automatically saving necessary modeling files to a package



7

Perform Net Positive Suction Head (NPSH) Analysis

Compare available and required net positive suction head to identify and correct problems in pumps



8

Display Curves for Variable Speed Pumps

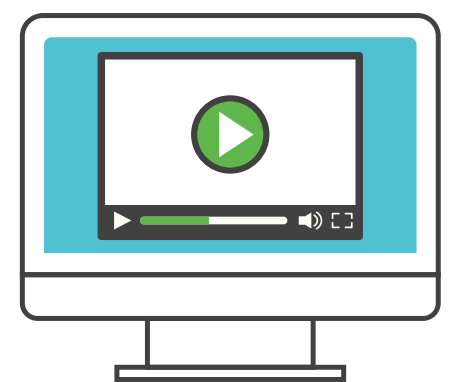
Visualize system head curves and pump characteristic curves in one graph, including variable speed pumps to identify operating points over a range of pump speeds



9

Capture Model Results in Video

Create videos in a user-friendly interface to share with stakeholders



10

Update to CONNECT Edition to Realize New Savings

Customers who update and use their new CONNECT Edition applications are eligible to gain new savings



You get all these new capabilities along with a **streamlined UI**, **new digital workflows**, **in-product learning**, and more!

WaterGEMS | WaterCAD | HAMMER

**DOWNLOAD YOUR
UPDATE TODAY!**

Learn more at www.bentley.com/CONNECT-WaterGEMS

Bentley®