

Modeling the Grid for Streamlined Renewables Integration



CHALLENGE

Today's power grids are rapidly evolving to include both traditional and distributed energy resources – this presents new challenges and increases **RELIABILITY** and **RESILIENCY** requirement

NEED

Evaluate impacts and understand potential problems.

SOLUTION

Use an always available and **UP-TO-DATE NETWORK MODEL**



Hannah Customer Service Representative

"As a customer service rep, I need to determine if the network can support new distributed generation resources and decide if the request can be approved or if engineering analysis is required."



BENEFITS

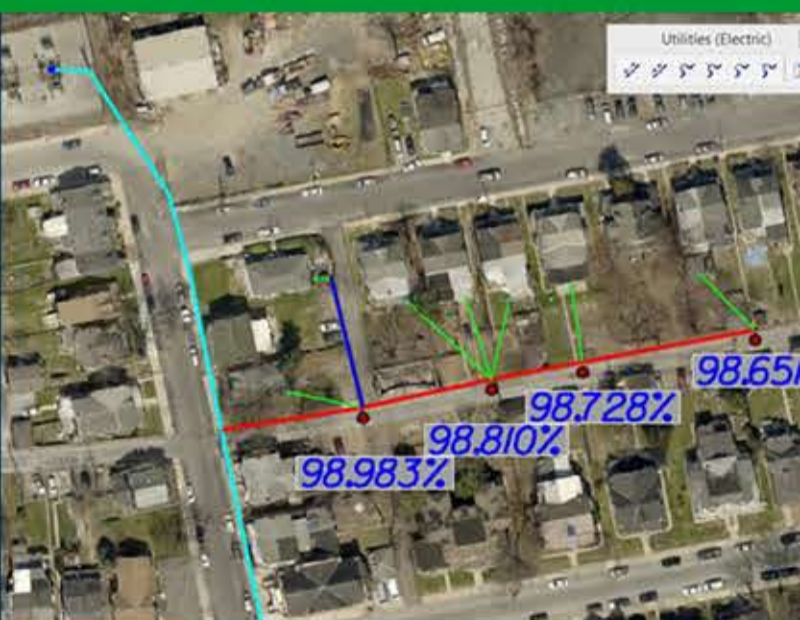
- Better impact analysis and decision-making
- Many requests can be approved without engineering analysis
- Requests that require further study are easily identified
- Respond quickly to customers and stakeholders
- Avoid harmful conditions
- Reduce costs

A MODEL DESIGNED FOR YOU

Avoid mistakes associated with conflicting, inaccurate, or obsolete data sources.



Accurate simulations provide guidance on grid performance.



OpenUtilities provides increased options for utilities who are facing increasing pressure to reduce costs, improve reliability, and build-in resilience in response to changing global markets