



AssetWise APM / IBM Maximo Enterprise Asset Management (EAM) Connector

Built-in, Tested and Certified IBM Maximo Integration for Optimized Equipment Performance

The performance-based front-end to IBM Maximo, AssetWise Performance Management provides asset strategy, condition based and mobile inspections and maintenance, consolidation and analysis of data from multiple sources to trigger work orders in IBM Maximo. AssetWise APM also provides backend analytics for continuous improvement of the living reliability program. Together, IBM Maximo and AssetWise APM enable a proactive daily process for operations and maintenance excellence.

AssetWise APM Supports and Drives a Proactive Asset Performance Management Process

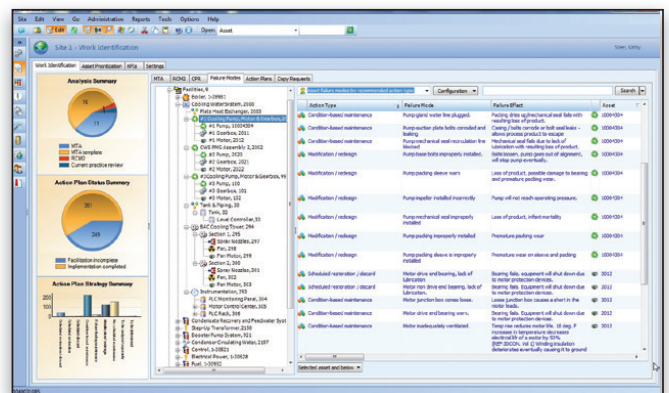
Today's maintenance organization must be forward thinking in their strategy to manage asset performance, integrity and reliability. With AssetWise Performance Management as a front-end to IBM Maximo Enterprise Asset Management, you can significantly improve your department and company results; increasing asset availability and utilization while lowering costs. In addition, AssetWise APM will reduce risk associated with asset failures and improve safety.

AssetWise APM drives a proactive process for asset performance, effectively changing the behavior of maintenance and operations. With one centralized view of asset health, AssetWise APM acts as a repository for reliability and integrity asset management programs. It consolidates condition data from visual inspections, predictive maintenance technologies, online systems, controls, sensors, and data historians. Automating the evaluation of equipment condition data to alarm by exception, AssetWise APM detects the onset of failure early, then recommends actions based on an alarm. The alarm triggers the right work on the right equipment at the right time directly in IBM Maximo.

Access to IBM Maximo in the Field

AssetWise APM includes mobile capabilities so that engineers and technicians have direct access to information required for inspection and maintenance tasks while in the field, either connected or disconnected. APM Remote provides visibility to the asset hierarchy, work, and asset history with ability to create corrective work orders or work requests while in the field. Standardized responses to condition inspection checks ensures consistency between inspectors, reduces errors, eliminates interpretation, and ensures timely response because it's automated. Engineers have visibility to overall asset health and alarm states are immediately available as readings are input.

The AssetWise APM / IBM Maximo interface is built-in, tested and certified by IBM Maximo. Bentley is an IBM Maximo Technology and Solution Partner.



Trigger the Right Work on the Right Equipment at the Right Time.

Business Benefits

- Reduce risk and ensure safety
- Ensure predictable production
- Eliminate unexpected downtime
- Increase availability and asset utilization
- Reduce costs
- Ensure compliance with industry regulations
- Eliminate islands of data
- Aligned with ISO 55000 and PAS 55 standards

IT Benefits of the Interface

The built-in, tested and certified interface provides the following IT benefits:

- Maximizes investment in IBM Maximo ensuring the right work is executed at the right time to optimize asset performance
- Accelerates IBM Maximo time-to-value Ensures ease of setup and correct behavior in the IBM Maximo environment through IBM Maximo certification
- Eases administration through automated synchronization of key data
- Reduces costly integration efforts
- Streamlines IT infrastructures
- Accelerates the deployment of AssetWise APM with IBM Maximo

System Requirements

Deployment Options

- Smart client three tier (LAN or WAN)
- Stand alone
- Client-server (LAN)
- Citrix/Terminal Services (WAN)

Databases Supported

- Microsoft SQL Server and Oracle

Technical Architecture

- Microsoft.Net
- Winforms user interface components
- Load balancing, application server management, hosted under IIS
- Unified deployment and migration tools
- Source code: C++ (business objects), C# (user interface)
- Open database connectivity using Microsoft ODBC and ADO.net



Find out about Bentley at: www.bentley.com

Contact Bentley

1-800-BENTLEY (1-800-236-8539)
Outside the US +1 610-458-5000

Global Office Listings

www.bentley.com/contact

For more information on AssetWise APM, contact your local APM representative.

AssetWise APM IBM Maximo Enterprise Asset Management Connector At-A-Glance

Asset Synchronization

- Synchronize master data from IBM Maximo into AssetWise APM as records are added or changed
- Key data synchronized are title, description, long description, asset classification, asset type, failure class, site, parent asset and status
- APM draws from this data as it builds asset reliability programs and manages asset performance
- IBM Maximo remains the master for all key asset data

Risk Prioritization/Asset Priority Synchronization

- Essential part of upfront strategic planning
- Helps ensure success of reliability initiatives
- Establishes an overall strategy with clear understanding of the risks to the business associated with your equipment (operational, safety, environmental, etc.)
- When an asset risk prioritization analysis is completed in AssetWise APM, it updates the Asset Priority number in IBM Maximo

Asset Reliability Strategy Development

- Technically-based reliability programs from RCM, RBI and MTA analyses form the basis for proactive maintenance
- The complete program resides in APM
- Link indicators of asset condition directly to failure modes

Mobile Inspections and Maintenance

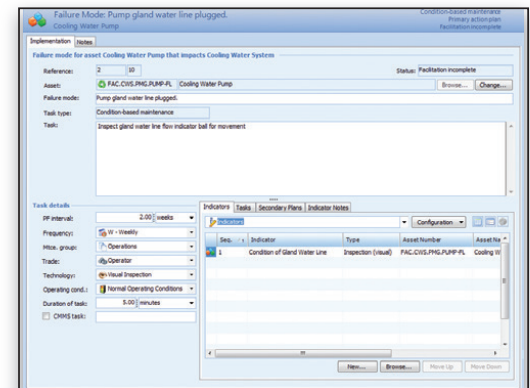
- AssetWise APM improves access to critical information in the field
- Work disconnected from the network for extended periods of time while maintaining access to IBM Maximo asset master data and work history
- Full list of inspection tasks with ability to trigger work requests and work orders as well as record items that are fixed during inspection
- Reduce errors in recording inspections and maintenance work in the field and gain timely data on which to make fast and accurate maintenance decisions

Task List and Maintenance Plan Synchronization

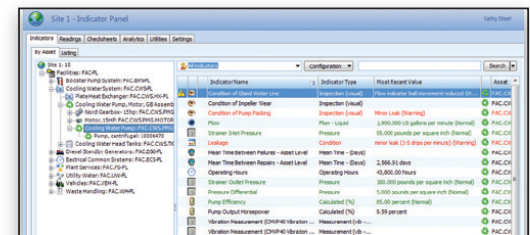
- Task lists in IBM Maximo synchronized from the asset strategy
- Linked to failure modes
- All types of task lists including general, equipment function and location-specific are synchronized and may be referenced on alarms
- Condition indicators in APM recommend specific IBM Maximo task lists when an alarm is triggered
- When a maintenance task is initiated in IBM Maximo, APM links back to the cause of failure (failure mode)

Work Order Creation and Close - The Right Work at the Right Time

- Using AssetWise APM to monitor the health of your equipment, all sources of condition data are consolidated and analyzed then alarms are triggered when an indicator is out of normal range or when a set of rules or calculations indicate that there is a problem
- With the acknowledgement of the alarm, either a notification or work order is created in IBM Maximo
- The notification indicates the equipment specific task list or functional location that is recommended as the appropriate pre-planned activity
- When resulting work is completed, the notification is closed and status returned to APM to drive important failure statistics



Failure Mode Action Plan



Indicator Panel with Alarm

