

Bentley® Communications PowerView V8i (SELECTseries 3)

Network Intelligence and Data Collection for Disconnected Field Personnel

Bentley Communications PowerView enables service providers to increase profitability and customer satisfaction by empowering field personnel with the intelligence and tools to be more productive. Unlike paper maps that become out of date, and applications that depend on unreliable network connections, Bentley Communications PowerView ensures technicians, inspectors, cable locators, and first responders always have accurate network information.

Disconnected Workflows for Assured Access

A customizable, mobile environment enables search and review of device and equipment data without requiring a database server connection or local database on the field computer. This ensures network information and reporting is always available, even in wireless dead zones and disaster locations.

Inside Plant Review for Rack and Wire Data

Rack displays and wire runs provide technicians with detailed information on facility equipment. Rack data includes rack ID, equipment type, rack weight, powering, and HVAC. Wire runs document the connections and functions of each wire.

GIS-based User Interface for Rapid Access to Network Intelligence

A map interface allows field personnel to pan and zoom to any portion of the network without the difficulty of managing and retrieving separate files. Fiber, coaxial, and copper network data, whether aerial strand, underground trench, direct buried, or conduit in duct can all be displayed on one map.

Powerful Search Capabilities for Quick Location of Job Sites, Facilities, and Devices

Searching by address enables technicians to zoom the map to a job site and access records for all the devices and facilities at that location. Searching by full or partial name or ID rapidly returns information about any device or facility in the network. Additional search capabilities including by customer, optical system circuit, or fiber outage are also available.

Integrated Imagery for Increased Job Site Intelligence

Network maps can be overlaid with georeferenced imagery that helps field personnel locate work sites, plan jobs, and add context to redlines. High performance binary and continuous-tone raster display ensures fast application response.

Review Equipment for Details on Active Devices

Using the map view, field personnel can select any active device to review critical data such as signal level, power,

voltage, and plug-in component information. XML Feature Modeling (XFM) combines equipment data and graphical information to provide intelligence that is unavailable from paper maps.

Butterfly Diagrams for Enclosure Layout Review

When servicing manholes, vaults, and enclosures, technicians can quickly review the detailed butterfly diagram of the facility. Details of the duct and cable layout as well as a list of where each fiber terminates allows rapid cable identification and faster work execution.

Splicing Diagram for Accelerated Cable Repair

Detailed diagrams of any splice enclosure provide the critical information technicians need to efficiently repair cables. All connection information, termination points, splices, fibers, buffers, and cables are displayed in an intuitive graphical format.

Cross-sections for Rapid Fiber Review

Cable cross-section views allow individual fibers to be traced by their buffer color to display connections, circuit connectivity, and working status. This lets technicians accurately identify spare fiber and complete cable work efficiently.

Duct Review for Rapid Cable and Conduit Interrogation

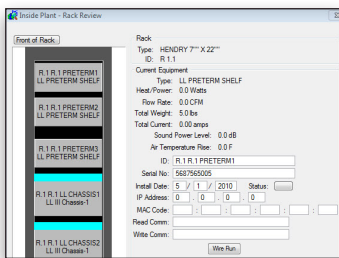
Color scaled cross-section views depict all the cables or conduits in a duct as well as cable and conduit ownership and leasing information. Selecting any individual cable provides technicians with detailed information, empowering them to make better-informed decisions.

Redlining for Increased Network Model Accuracy

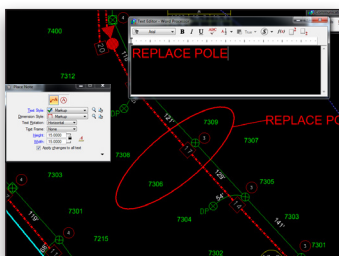
Field personnel can use an overlay file to add notes, record actions, and depict as-built information on digital maps and diagrams. Redlines can be returned to engineering and mapping departments for increased network model accuracy. This enables fewer errors in design procedures and enterprise workflows.



Integrated imagery helps technicians plan work and interpret network maps.



Detailed inside plant information allows technicians to work more quickly.



Digital redlines enable increased collaboration and more accurate records.

System Requirements Workstation

Processor:

Intel or AMD, 3.0 GHz or greater

RAM:

Minimum 2GB, more recommended

Hard Disk:

Minimum 2GB of free space

Input Device:

Mouse or digitizing tablet

Video:

Graphics card supporting DirectX 9.0c

Operating System:

Windows XP Professional (32- or 64-bit), Windows Vista (32- or 64-bit), Windows 7 (32- or 64-bit)

Server Software Prerequisites

Bentley Communications PowerView is a workstation application that interfaces with the server portion of other Bentley communications products. At least one of the following products must be present on the server: Bentley® Coax, Bentley® Copper, Bentley® Fiber, Bentley® Inside Plant.

Find out about Bentley at: www.bentley.com

Contact Bentley

1-800-BENTLEY (1-800-236-8539)
Outside the US +1 610-458-5000

Global Office Listings

www.bentley.com/contact

Bentley Communications PowerView At-A-Glance

General

- Disconnected access to communications network maps with equipment and feature information
- Rapid collection of field data, as-built reporting, and other field applications
- Data can be searched and reviewed without the need for a database server connection or local database
- DGN extractor for generating graphical representation of Oracle Spatial data
- XML Feature Modeling uses an efficient format that marries graphic and database information together in the DGN file
- Redlining tools for taking notes and recording as-built information on maps and diagrams
- Pan and zoom to any portion of the network
- Information layers can be easily turned on and off
- User interface and common data model complements other Bentley communications products

Locate

- Search capabilities include:
 - » By street address
 - » For any facility or device

- » By customer
- » By optical system
- » By fiber outage
- Maps are loaded automatically and zoom to display the selected facility or device

Review Functionality

- Review detailed information for facilities, devices, and equipment including:
 - Cables, which can be selected and reviewed from the duct display
 - Ducts, including inner duct and cable
 - Facilities and addresses
 - Fiber cross-sections
 - Inside plant details, including rack ID, equipment type, rack weight, powering, HVAC, and wire runs
 - Manhole and splicing diagrams

Redlining

- Easy redlining with text and markup tools
- Drawing tools that leverage the power of MicroStation® drawing tools
- Unique colors for redlines submitted by different field personnel
- Field personnel can add notes, actions, or depict as-built information that can be shared with others
- Tablet PC support

Imaging

- High-performance image display
- Industry-standard file format support, including MrSID and ECW
- 32-bit color image depth
- Automatic positioning of image types supporting georeferencing

Additional Formats Supported

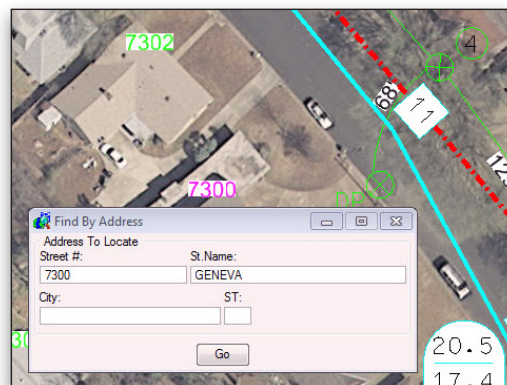
- Fast, configurable display of industry-standard file formats
- DWG, SHP, MXD file read and reference

Extensible Through Customization

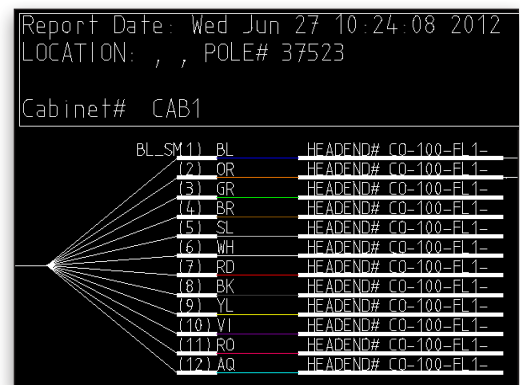
- Visual Basic for Applications (VBA) support
- Existing MDL API support
- COM access support

Coordinate Transformation Tools

- Integrated coordinate system toolset
- Predefined coordinate systems included
- Ability to read custom coordinate system definitions
- Automatic reference file transformations



Multiple search capabilities allow field personnel to find information quickly.



Intuitive splicing diagrams enable efficient cable repairs.