



## Bentley Vision V8i (SELECTseries 6)

Seamless Access to Critical Project Information Via Single Interface

The unique and easy-to-use tag tree interface of Bentley Vision V8i lets personnel quickly find and view plant data and documentation for any tag-numbered plant component. Users with the appropriate permission levels can launch the native application for editing and then save a revision-controlled copy of the document in the Bentley Vision V8i document archive.

### Integrated Information Management Facilitates Data Access

With Bentley Vision V8i, users can easily access and manage the intelligent plant information stored in project database. Data from both functional and physical design is shared in a common, centralized database. Bentley Vision V8i provides a powerful environment to visualize and manage intelligent plant information without the need to run the native content creation application.

### Tag-centric Approach Provides Fast Data Access

Bentley Vision V8i allows critical plant information to be accessed by a component's tag number. For each tagged item, users can quickly view any associated drawing containing the item and its project database information. Users can also access additional documents that reference the component.

### Displaying Component Relationships Increases Ease of Use

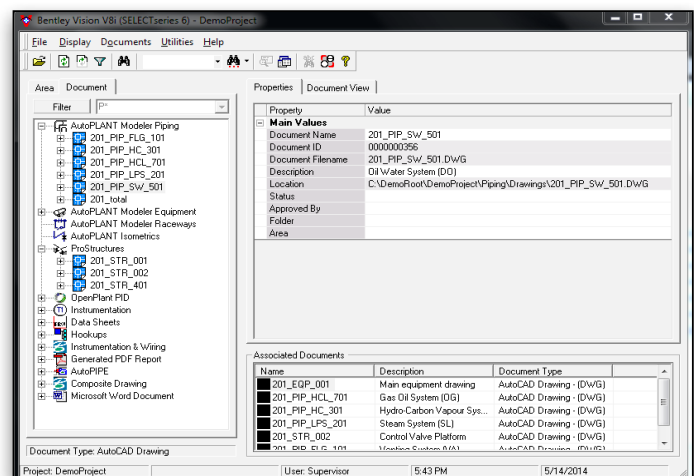
Bentley Vision V8i provides a graphical display of the plant asset hierarchy and the relationships among components. Selecting a vessel in the tag tree displays a list of nozzles and process lines connected to the vessel. Selecting one of the lines displays all branch connections and in-line components, including valves and instrumentation. Selecting a specific drawing displays all tagged components within the drawing.

### Lifecycle Management of Plant Data Extends Its Value

Bentley Vision V8i enables users to extend the value of their plant engineering data throughout the plant's lifecycle. Drawings and data completed for plant design and construction are available to assist in the operation and maintenance of the facility.

### Integration With External Data Sources Streamlines Workflows

The Bentley Vision V8i Add-Ins API makes it easy to integrate external data sources and applications. Any database that can be accessed through standard



*Bentley Vision V8i presents data in an intuitive and easy-to-use interface.*

data access tools can be displayed within Bentley Vision V8i. Typical uses for the Add-Ins API include the integration of maintenance work order, inspection, inventory, and document management data.

### Simple Document Management Enhances Data Quality

Bentley Vision V8i offers users simple document management tools. In addition, it integrates with ProjectWise® V8i, Bentley's project team collaboration software, to provide a more sophisticated managed environment.

### Integration With Other Software Speeds Creation of Plant Design Data

Bentley Vision V8i integrates with Bentley AutoPLANT®, PlantSpace®, and OpenPlant design tools to enable the creation and management of plant design data. 2D schematic drawings such as P&IDs and loop diagrams can be accessed as easily as 3D plant models. Any other associated Bentley plant documents, such as Datasheets or Hookups associated to the component tags, are also accessible via Bentley Vision V8i.

## System Requirements

### Software

AutoCAD 2014 (64 bit),  
Microsoft Office 2010 Professional  
(32 or 64 bit), Microsoft SQL  
Server 2008 R2 Enterprise Edition,  
ORACLE 11g Release 2 (v11.2.0.3)

### Processor

Intel Core i7, Intel Xeon,  
AMD Phenom, or AMD Opteron

### Operating System

Microsoft Windows 7 (64-bit)  
Enterprise, Professional or  
Ultimate Edition

### Memory

8 GB (minimum) for Microsoft  
Windows 7 (64-bit)

### Graphics Card

1 GB Microsoft Direct3D-capable  
workstation-class graphics card

### Disk Space

2 GB available

Find out about Bentley  
at: [www.bentley.com](http://www.bentley.com)

### Contact Bentley

1-800-BENTLEY (1-800-236-8539)  
Outside the US +1 610-458-5000

### Global Office Listings

[www.bentley.com/contact](http://www.bentley.com/contact)

## Bentley Data Manager V8i At-A-Glance

### Easy to Use

- Offers intuitive user interface for easy access to critical plant data and documents
- Provides powerful search capabilities for quick access to tagged component data and documents
- Uses graphic display of plant component hierarchy and relationships with the tag tree interface
- Provides the ability to select a tag for the automatic display of associated plant documents in the built-in viewer
- Displays automatically the properties of the component and location within the tag tree
- Lists associated documents that reference a tagged component, viewable in the Associated Documents window

### AutoPLANT Application Integration

- Allows access to AutoPLANT 2D schematic and 3D plant design data through a common interface
- Provides the ability to launch design applications directly from the document interface

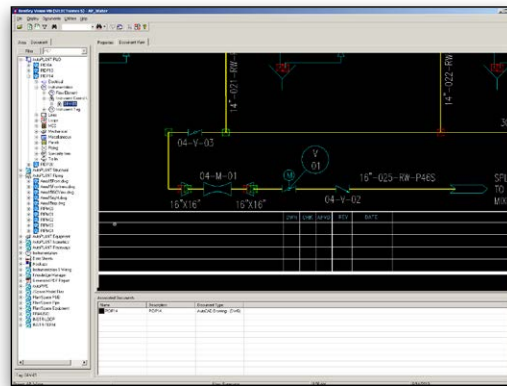
- Enables users with appropriate permission levels to edit component records
- Provides support for Microsoft Access, SQL Server Express, and SQL Server or Oracle

### Document Management

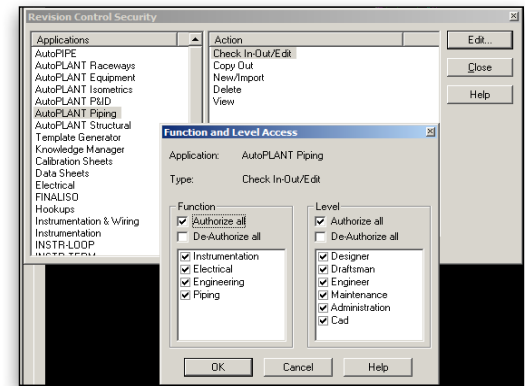
- Stores each file revision in document file archive
- Extracts title block data from DWG files automatically
- Restricts file and data access and edit rights by user or group
- Provides history of all document revisions and user information with audit tracking

### Add-ins API

- Provides quick integration of external data sources and applications
- Displays maintenance, inspection, inventory, and related data within the Bentley Vision V8i interface
- Integrates with ProjectWise V8i for a complete managed environment



Use the tag view to examine data and open related drawings.



Only plant personnel with the appropriate permissions may checkout, update, and archive an original document.