



OpenPlant ModelServer V8i (SELECTseries 5)

Effectively and Productively Manage Across Multiple Stakeholders, Disciplines, and Projects

OpenPlant ModelServer V8i (SELECTseries 5) is the most flexible plant design software on the market today supporting distributed project team members with robust access control and management, highly visible status tracking, and efficient data exchange.

Combined Component and File Management Enables Increased Productivity

File management is key to the efficient exchange of deliverables and work packages across different organizations, while component management supports a higher level of abstraction, productivity, and quality of work. Now, users can meet both requirements using a single software application. OpenPlant ModelServer V8i reduces project schedules and costs for new design and construction as well as maintenance and retrofit of existing plants.

While providing scalability from small to very large projects, OpenPlant ModelServer V8i gives control to the individual designer. As components are finished, they can be checked in for other designers to check out and review. There are no predetermined models or files that have to be created on project start. Projects can start sooner and provide flexibility to design teams.

Integration with ProjectWise Facilitates Global Project Management

Utilizing OpenPlant ModelServer V8i in conjunction with ProjectWise, designers can easily and securely coordinate projects that are globally dispersed and include multiple firms. All project participants can access the current status of all components using a simple-to-use interface. Users can quickly create reports based on any or all project components from any location to provide clear visibility into the design work of today's loosely coupled, globally sourced project teams.

Security within ProjectWise V8i exposes only the proper working set and restricts edits to those users who have not been granted permission. This provides consultants or joint ventures access to the project as required, from anywhere in the world.

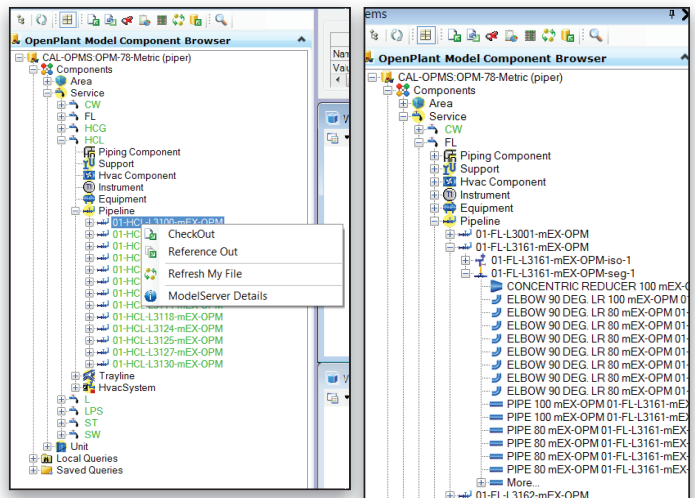
Central Component Repository Provides Flexibility, Reduces Administration Costs

OpenPlant ModelServer V8i allows project participants access to all components from one central location regardless of where they are in the world. Check-out determines what designers work on during the active session, from a single component to an entire project. On check-in, components update the central repository so team members can begin working on that component. This eliminates the requirement for database replication and reduces administration costs.

In addition, the ability of OpenPlant ModelServer V8i to have multiple projects share a single ProjectWise data source reduces overall project administration. OpenPlant ModelServer provides a configurable tree browser to the OpenPlant Modeler user, which displays information in the repository, allowing designers to configure different views through custom queries to view data that is pertinent to their specific areas of interest on the project.

PDS Models Support Integrated Workflow

OpenPlant ModelServer V8i supports workflows that include PDS generated models. Through ProjectWise PDx Dynamic Review Service, PDS files can be brought into the world of managed, distributed projects, ensuring existing models can move forward into an integrated, distributed world.



The Model Component browser provides designers complete visibility into component status.

The Model Component browser provides a concise breakdown of the contents of the model repository.

System Requirements

Software

ProjectWise Integration Server V8i (SELECTseries 2 or higher)

ProjectWise Explorer V8i (SELECTseries 3 or higher)

Processor

2 GHz x86 or x64 processor or better, dual-core or multiple-processor architecture is strongly recommended

Operating System

Windows Server 2012 (64-bit); Windows Server 2008 R2, Standard or Enterprise Editions (64-bit)

Memory

2 GB memory, 4 GB or greater recommended

Disk Space

10 MB free disk space (in addition to the requirements for ProjectWise Integration Server V8i)

Video

Any card that fulfills MicroStation V8i requirements. Graphics card supported by DirectX 9.0c, 256 MB of video memory or higher is recommended

Find out about Bentley at: www.bentley.com

Contact Bentley

1-800-BENTLEY (1-800-236-8539)
Outside the US +1 610-458-5000

Global Office Listings

www.bentley.com/contact

OpenPlant ModelServer V8i (SELECTseries 5) At-A-Glance

Central Management

- Reference data for components worked on by other team members synchronized to provide up-to-date designs
- Multiple projects can share same data source, speeding project work and reducing administrative overhead
- OpenPlant ModelServer leverages the robust security and workflow tools in ProjectWise
- All data accessed from a central source removing the need for database replication to execute distributed projects
- Sites can update changes on a regular basis
- Only plant model components needed for design are checked out and in
- No wait time for file downloads and locked files
- Database refreshes automatically when users update changes

Component Browser

- View all available components by connecting to the project server
- Check-out limited to only those elements needed to work on
- Check-out locks components for editing by other users
- Access to components modified as required for a particular team member

Support Workflows and Standards Across Projects

- Standard component libraries
- Configurable project parameters

Refresh Data

- No need to check in components to update central repository; all updated components, plus any referenced-out component details, received by designer by clicking "Refresh All"

Project Status

- Complete project status reporting of all components from the central repository in ProjectWise
- Centralized management provides simplified project coordination, including tracking any and all project components regardless of team location

ProjectWise Integration

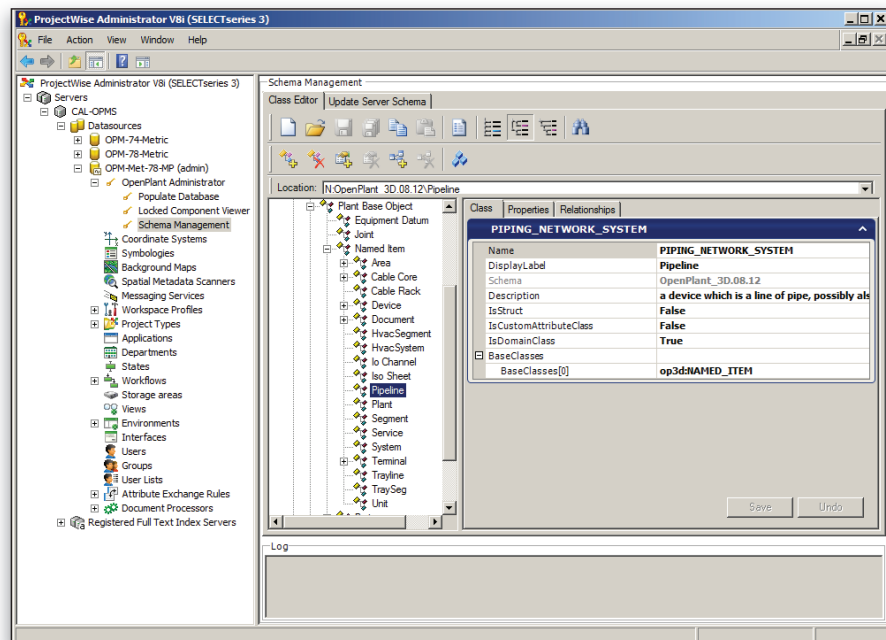
- Local working model updated with current data each time a user checks out a component
- In-use components are locked to guard against competing changes
- Remote access enabled by ability to disconnect client from server, freeing users to work anywhere
- Central configuration settings for everyone working on the same project
- Flexible capabilities for offsite workers

ProjectWise Delta File Transfer

- Faster file transfers with delta file transfers
- Reduced network loads by transmitting only the changes
- Real-time access by team members working across offices and geographies

Administration Tools

- OpenPlant ModelServer V8i administration tools are integrated with ProjectWise Administrator



OpenPlant ModelServer Administration is integrated with ProjectWise V8i Administrator.