

**Bentley**<sup>®</sup>  
Advancing Infrastructure

 CONNECT Edition



## Orbit 3DM™ Publisher and Orbit 3DM Cloud CONNECT Editions

Publish and Share Unlimited Volumes of Your 3D Mapping Data

### Smart 3D Mapping for Sharing and Publishing

Orbit 3DM Publisher and Orbit 3DM Cloud enable you to efficiently share massive amounts of point cloud, imagery, textured mesh, and traditional GIS resources. The software can publish your aboveground, belowground, or indoor reality data acquired from terrestrial, mobile, UAS, oblique, and aerial mapping systems. Hardware-neutral, Orbit 3DM Publisher and Orbit 3DM Cloud give users a full 3D 360° view of the world by enabling the real-time fusion of various reality data resources of any size from any system.

### The CONNECT Edition

The SELECT<sup>®</sup> CONNECT Edition includes SELECT CONNECT services, new Azure-based services that provide comprehensive learning, mobility, and collaboration benefits to every Bentley application subscriber. Adaptive Learning Services helps you master use of Bentley applications through CONNECT Advisor, a new in-application service that provides contextual and personalized learning. Personal Mobility Services provides unlimited access to Bentley apps, ensuring you have access to the right project information when and where you need it. ProjectWise<sup>®</sup> Connection Services allows you to securely share application and project information, to manage and resolve issues, and to create, send, and receive transmittals, submittals, and RFIs.

### 3D Mapping Data in a Web Browser

You can share, view, and use your 3D mapping data on the web. Orbit 3DM Publisher and Orbit 3DM Cloud produce the full 3D view in a browser and allow you to easily navigate through terabytes of point-cloud data and images. You can effortlessly publish geo-tagged spherical and planar images, captured ground-level images, aerial oblique images, or nadir images. These images can be combined with point clouds, textured mesh and overlay vector data, including web feature services.

Smart reference capabilities instantly grant insight with real-time indications of all view positions, view orientations, and resource footprints on top of your favorite base maps. The applications can dynamically switch layers on and off, adjust presentations, measure, annotate, and create 3D fly-through animations. Options include searching for objects or using the geocoding services. You can select objects and request attribute information, or record a snapshot of information for a specific time with all metadata included.

### On Premises and Cloud Based

From your local server or our cloud-based service, you can share your 3D mapping data over the internet to web browsers and mobile devices, or integrate it into your custom workflow.

Orbit 3DM Cloud is a cloud-based service and does not require any installation. You can easily create an account for your organization, upload materials, and invite users to view and use your 3D mapping data. By setting up Orbit 3DM Publisher on-premises, you gain full control of your IT infrastructure, storage, data, and workflows.

### Catalog and Manage Your Data and Publications

With Orbit 3DM Publisher and Orbit 3DM Cloud, you'll receive a user-friendly console with fundamental catalog tools to manage your 3D mapping content. These management capabilities include combining 3D mapping resources, base maps, and other reference resources into ready-to-use publications. The applications grant you full control to manage user credentials or publish your content in a login-free environment.

Both applications allow you to easily view login data, configure web pages, and generate direct web links. You can create a publication addressing the exact needs of your users by adding metadata, configuring the view compositions and resource presentation, and specifying available features.

### Measure and Extract

With Orbit 3DMPublisher and Orbit 3DMCloud, you can accurately measure 2D and 3D coordinates from all mapping resources. Various point cloud measuring techniques, mesh and DEM intersections, reference planes, and triangulation measurements can all be combined. The applications include options such as measuring on images alone or on an image overlaid on a point cloud. You can quickly measure, attribute, and extract points, lines, and areas, and download the results for export.

### Time as the Fourth Dimension

Orbit 3DMPublisher and Orbit 3DM Cloud allow you to manage several years of 3D mapping data, combine and compare mapping data over time, display your time lapses, and annotate the differences.

### SDK and Plug-ins to Integrate in Third-party Workflows

Our publishing solutions come with a standard web viewer, ready to use plug-ins, and an SDK to develop custom workflows and view integrations. Plug-ins for Esri, AutoCAD Map, and QGIS are also available. You can easily integrate plug-ins for your workflows via the available API/SDK, or work via one of the available third-party software plug-ins for Esri, Autodesk, QGIS, or MicroStation<sup>®</sup>.

## System Requirements

### Orbit 3DM Publisher

#### Operating System

64 bit, Microsoft Windows Server 2008 or higher, Linux Ubuntu 14 or higher

#### Processor

Powerful CPU

#### Graphics Card

No GPU required

#### Memory

8 GB to 16 GB

#### Disk space

1 GB

#### Storage

Fast storage access

### Orbit 3DM Viewer for Publisher and Cloud

#### Browser

Up-to-date Chrome, Edge, Firefox, Safari

#### Graphics Card

Basic GPU, hardware acceleration

#### Others

WebGL1 and EXT frag depth, WebSocket and HTTP communication with server

Find out about Bentley at: [www.bentley.com](http://www.bentley.com)

#### Contact Bentley

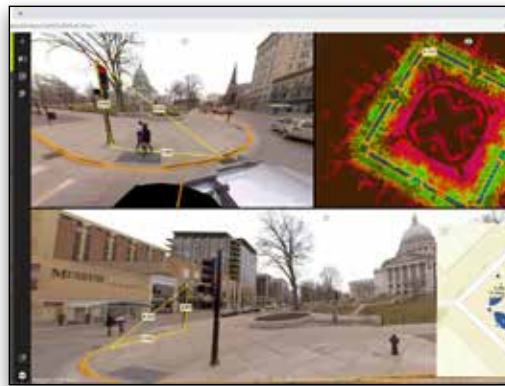
1-800-BENTLEY (1-800-236-8539)  
Outside the US +1 610-458-5000

#### Global Office Listings

[www.bentley.com/contact](http://www.bentley.com/contact)

## Orbit 3DM Publisher and Orbit 3DM Cloud At-A-Glance

- Automatically recognize points, surfaces, ridges, and corners
- Build your own plug-in using the 3D Mapping Viewer SDK for .NET, JavaScript, and Python
- Catalog, group, and archive mapping data
- Create 3D fly-through movies
- Create easy-to-use publications combining various resources
- Display oblique or nadir images
- Display point cloud, mesh, and vector data in full 3D view
- Display spherical images
- Import data of any size from any mapping system
- Measure points, lines, areas, and simple volumes
- Navigate mapping data in full 2D or 3D view
- Organize mapping data e.g. multiple years, floors, and timelines
- Overlay vector data and point cloud on imagery
- Publish on the web with 3D Mapping Viewer
- Publish to third-party workflows with 3D Mapping Viewer plug-ins
- Request and display resource metadata
- Set skyline backdrops in 3D view
- Share GIS and mapping data over the web
- Show footprints on reference view
- Show measurements by point cloud, mesh, DEM, reference planes, and forward intersection
- Slice horizontally and vertically
- Store and share data with Software as a Service (Orbit 3DM Cloud only)
- Use ready to use plug-ins for ArcGIS (Map, Pro, Online), AutoCAD Map, and MicroStation



Overlay any vector data over maps and panoramas.



Show footprints on a basemap.