



ProjectWise Specifications Management

Intelligently Create, Control, and Comply with Engineering Specifications, Codes, and Standards

ProjectWise Specifications Management is the only purposely built specification software that features the revolutionary spec modeling approach, including template-driven authoring, infinite repurposing for different uses or users, and the linking of specification content with related information. With ProjectWise Specifications Management, authors can create and manage specifications (and other critical documents) more efficiently and more accurately. Plus, spec users can better focus attention on the task at hand by easily publishing custom versions of the spec by trade discipline, project phase, and more.

Exclusively Designed for Critical Document Management

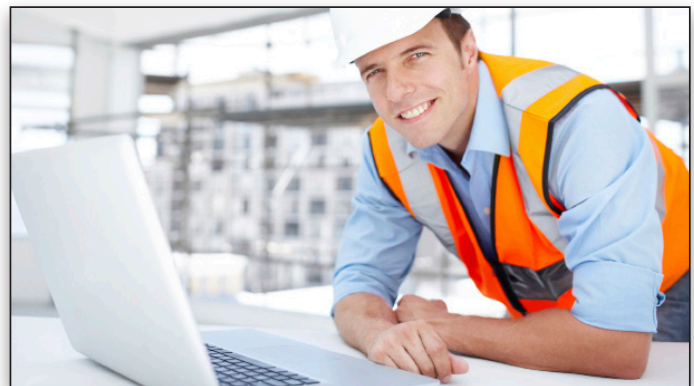
Codes, standards and engineering specifications are among a project or an organization's most-critical documents. Mistakes in these documents can have significant negative impacts – including causing project work to stop or to be redone, or creating major health, safety, liability, or asset performance issues.

Despite their significance, nearly all specifications are created and shared in an unmanaged manner using general-purpose software – such as Microsoft Word. The result is increased risk, as unmanaged manual document creation and updates are error prone, and specifications can become out of date due to source information changing without the author's knowledge.

ProjectWise Specifications Management provides an entirely new paradigm in specification creation and usage, allowing users to employ more rigor in specification development as well as save countless hours of work, while also enjoying far fewer errors and more accurate specification documents.

Streamline Specifying with Multi-Purpose Documents

With ProjectWise Specifications Management, specification tasks are highly automated. Authors can create structured templates and produce specs that contain component-based features with manageable attributes as well as basic text. These attributes allow the specification to be authored once and reused for multiple purposes, reducing errors, enforcing standards, and allowing



Designers, constructors, and operators can use ProjectWise Specifications Management to reduce risk on a wide variety of infrastructure projects by improving the creation, control, and compliance with critical documents such as codes, standards, and engineering specifications.



the author to focus on engineering requirements instead of document formatting.

Concentrate Spec Compliance through Persona-driven Views

ProjectWise Specifications Management also provides unprecedented capabilities for specification consumers. For the first time, specification users can easily organize, view, and even publish custom versions of a specification based on a wide variety of criteria including trade discipline, project phase, business group, and more. This makes specs easier to follow and eliminates distractions by removing information irrelevant to the task at hand.

Extend Accuracy via Managed Specification Collaboration

ProjectWise Specifications Management leverages ProjectWise – an organization's shared source of truth and the global standard for infrastructure project collaboration.

By managing specifications in ProjectWise, change can be managed in a more disciplined and effective manner and you can ensure that project participants are always "on the same page" with access to the proper specs. Plus, document attributes in ProjectWise can automatically be updated in ProjectWise Specifications Management, helping to maintain document standards.

System Requirements

Operating System

Windows XP SP3 (32-bit), Windows XP SP2 (64-bit), Windows Vista SP2 (32- and 64-bit), Windows 7 SP1 (32- and 64-bit), Windows 8 (32- and 64-bit), Windows Server 2008 SP2, Standard and Enterprise Editions (64-bit), Windows Server 2008 R2 SP1, Standard and Enterprise Editions (64-bit), Windows Server 2012, Standard and Enterprise Editions (64-bit)

Software

Microsoft .NET Framework 4.0

Optional: ProjectWise (SELECTseries4) if installing the Bentley ProjectWise Integration

Optional: Microsoft Word 2003 or later if using the ProjectWise Specification Management Migration Wizard

Processor

1 GHz processor or greater

Memory

1 GB of RAM

Disk Space

30+ MB of hard drive space

Find out about Bentley at: www.bentley.com

Contact Bentley

1-800-BENTLEY (1-800-236-8539)

Global Office Listings

www.bentley.com/contact

ProjectWise Specifications Management At-A-Glance

Spec modeling

- Use a standardized format and process for creating specifications and other similarly valuable documents
- Create, administer, and automate specification documents

Multi-purpose Documents

- View filters enable information relevant to multiple purposes and use cases can be maintained in a single document simultaneously

Spec-driven Workflow

- Provides the proper prompts and fields for the user to insert the necessary information

Template Style Administration

- Defines corporate style, required document structure, rules, and allowable tags

Migration Wizard

- Migrates existing documents into ProjectWise Specifications Management and in the SPECX format
- Validates documents at the end of the migration process to identify conflicts and confirm the accuracy of the new SPECX document

Template Transformation

- SPECX files can be transformed from one template into another
- Templates can be repurposed

SpecDiff Multi-file Comparison

- Visualize differences between files side by side, graphically, and in color

Linking

- Objects in a specification can be linked to:
 - » Objects in the same and other specification
 - » Files
 - » Web addresses
 - » Email addresses

ProjectWise Attribute Exchange

- Tags in SPECX documents can be linked with ProjectWise so that when the value of document attribute is changed in one location (either in ProjectWise or the SPECX document) it is automatically updated in the other

Robust Search

- Search full text, tags, and metadata using a variety of constraints and parameters
- Search across a single file, multiple files, projects, or master libraries

Revision Manager

- Store revisions to create snapshots at various milestones or workflow stages
- View, track, delete, restore, and compare revisions

Persona-driven Views

- Organize specifications by a variety of purposes or characteristics including trade, project phase, language, project type, business group, jurisdiction, and more